



HOUSEHOLD CLIMATIC EQUIPMENT CATALOGUE

LIVING IN COMFORT



Electric convectors	2
Electric fan heaters	24
Oil-filled radiators	30
Electric fireplaces	34
Underfloor heating systems	46
Hand dryers	54
Electric water heaters	62
Air-handling units	82

ELECTRIC CONVECTORS

Warm aura of your home

Electrolux electric convectors are innovative, energy-efficient and absolutely safe household heating products, made in compliance with the recent design and high-technology trends. This helps to heat all area types up to 35 m²: flats, country houses, summer cottages, offices, commercial real estate properties. Each heating issue will have its own product. Minimalism, loft, high tech, magnificent art deco and all the range classic – Electrolux convectors are adapted to all interior styles.

We equip them with the most-advanced heating elements, wide range of options, reliable safety system and universal mounting for the maximum comfort level.



Model range	Power, W										
	1000	1200	1300	1500	1600	1700	1800	2000	2200	2400	2500
ECH/AG2 series	•		•	•				•			•
ECH/AT series				•		•		•			
EIH/IR series				•			•				
ECH/BM series		•			•						
EIH/S series				•				•			
EIH/AG2 series	•			•				•			
ECH/T series	•			•				•			

Advantages



Saving ability more than 3 times

Smooth power control of the heating element depending on the difference between the preset and real room temperature allows to save more than 3 times of electrical power.



Rapid and effective heating

New-generation quiet monolithic heating element is 20% smaller and more effective than the traditional heating elements.



Reliability and safety

Taking care of your calm and comfort, we make all efforts in order to ensure the safety use of our products.



Wide range

The range includes a wide range of innovative developments: from simple models to revolutionary models with the patented technologies. Each series has an individual design and is suitable for any interior.

ELECTRIC CONVECTORS

Electric convector Electrolux ECH/AG2 series has incorporated advanced heating technologies that have become a guarantee of reliable operation and efficiency. The unique patented control technology of digital INVERTER convector – energy saving for more than 3 times comparing to the traditional convectors.*



Technical characteristics

Characteristic/Model	ECH/AG2-1000 3BE EEC ECH/AG2-1000 3BI-W EEC	ECH/AG2-1300 3BE EEC ECH/AG2-1300 3BI-W EEC	ECH/AG2-1500 3BE EEC ECH/AG2-1500 3BI-W EEC	ECH/AG2-2000 3BE EEC ECH/AG2-2000 3BI-W EEC	ECH/AG2-2500 3BE EEC ECH/AG2-2500 3BI-W EEC
Voltage, V/Hz	220-240 / 50-60				
Heating power Full, W	900 - 1000	1150 - 1300	1350 - 1500	1800 - 2000	2250 - 2500
Rated Current, A	4.1-4.17	5.23-5.42	6.14-6.25	8.18-8.33	10.23-10.42
Electrical protection class	I				
Ingress protection class	IP24				
Heating area, m²	9-10	11-13	13-15	18-20	22-25
Appliance dimensions (W×H×D), mm	480×139×413	560×139×413	640×139×413	800×139×413	1000×139×413
Package dimensions (W×H×D), mm	575×167×445	655×167×445	735×167×445	895×167×445	1095×167×445
Net weight, kg	3.85	4.00	4.39	5.40	7.59
Gross weight, kg	4.76	4.95	5.41	6.56	9.06

* Electricity consumption is 3 times less than in Electrolux convectors with mechanical control.

Unique technologies

Aerodynamic design of the convection section
No overheating of the internal elements

Louvers
The patented design ensures the uniform and increased convection and reduces the body temperature

TURBO-flow of warm air
Trapezoid form of the convection section guarantees the strong uniform air flow

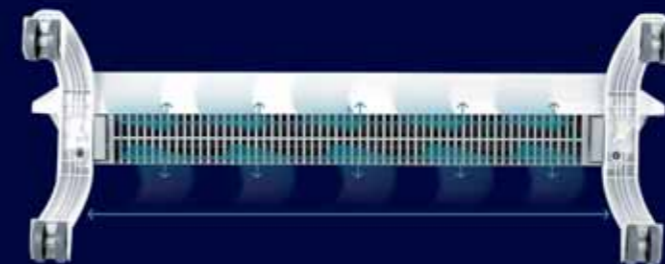
Heating element HEDGEHOG
Patented technology of the new-generation monolithic heating elements with the service life more than 25 years

Air inlet INTAKE
Special mounting of the feet doesn't close the air inlet, provides the higher efficiency of the convector



Mounting technology of the heating element THERMORESIST COMPACT
The new mounting Thermoresist Compact has the increased stability against the high temperatures and small sizes, which helps to increase the effective area of the heating element

Air inlet INTAKE



More air intake – faster heating

The air inlet has the increased width and length thanks to the new mounting of the feet, compared to the traditional convectors. This increases the speed of the incoming air flow and, as a result, the room heating rate.

Two types of the control boxes to choose



Ultimate superiority of digital INVERTER technology for heating. Energy saving for more than 3 times*



- Absence of starting currents
- Open window sensor
- Extension of heating element life cycle for 2 times
- Stable maintaining of the desired temperature with maximum accuracy up to 0,1°C
- Creating possibility of intelligence electrical heating system

* Electricity consumption is 3 times less than in Electrolux convectors with mechanical control.

4th generation of control box



Electronic control box

Intellectual control box with LED-display, saves the user's personal settings

- Three temperature operation modes:
 - Comfort (from +5°C up to +35°C)
 - Energy saving (4°C lower than Comfort)
 - Anti-freezing (keeping +5°C)
- Two power modes
- Additional functions:
 - "Parental control"
 - Individual programm 24/7
- Enables to control convector by Wi-Fi



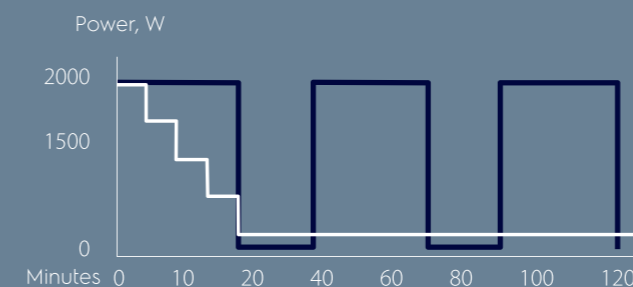
digital INVERTER control box

3 times more efficient

- Three temperature operation modes:
 - Comfort (from +5°C up to +35°C)
 - Energy saving (4°C lower than Comfort)
 - Anti-freezing (keeping +5°C)
- Two settings of the operation modes:
 - Automatic
 - User
- Additional functions:
 - "Parental control"
 - Individual programm 24/7
- Enables to control convector by Wi-Fi

Automatic power switch for energy saving

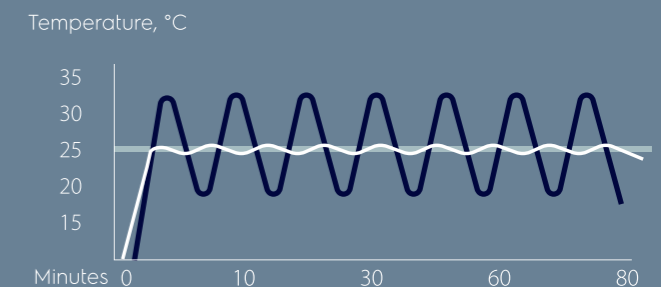
digital INVERTER technology controls the convector's operation automatically, by choosing optimum power for desired temperature maintaining, which helps to minimize the starting currents.



— Convectors with the technology digital INVERTER: Power, W
— Traditional convectors: Power, W

Temperature accuracy

digital INVERTER technology ensures the stable temperature maintaining with maximum accuracy up to 0,1°C, that provides more comfort when using the convector.



— Preset temperature, °C
— Convectors with digital INVERTER technology: Room temperature, °C
— Traditional convectors: Room temperature, °C



Control via Wi-Fi*

- Creating possibility of intelligent electrical heating system, as well as air conditioning, water heating and air humidifying

- Distant control of any electric quantity convectors

- Areas/rooms grouping of devices
- Flexible programming of operating modes 24/7
- Individual preferences for each area/room

* Built-in Wi-Fi is only available for the models with the digital INVERTER control box. Application is not provided by Electrolux. Please refer to your distributor for more detailed information.

Creating possibility of intelligent electrical heating system



ELECTRIC CONVECTORS

Electric convector ECH/AT – unique design together with the most advanced technologies. Thanks to the full-size grid of air outlet, the room heating can be achieved immediately. The control box with the digital INVERTER technology provides the stable maintaining of the desired temperature with the maximum accuracy up to 0,1°C. And also this allows to get more than 3 times of energy saving*. The steady feet don't close the incoming airflow into the air inlet. The stylish color full-size display enables the convector to become the part of any interior.



Technical characteristics

Characteristic/Model	ECH/AT-1500 3AE EEC ECH/AT-1500 3AI-W EEC	ECH/AT-1700 3AE EEC ECH/AT-1700 3AI-W EEC ECH/AT-1701 3AI-W MG EEC ECH/AT-1702 3AI-W SB EEC ECH/AT-1703 3AI-W BI EEC	ECH/AT-2000 3AE EEC ECH/AT-2000 3AI-W EEC ECH/AT-2001 3AI-W MG EEC ECH/AT-2002 3AI-W SB EEC ECH/AT-2003 3AI-W BI EEC
Voltage, V/Hz	220-240/50-60		
Heating power Full, W	1350 - 1500	1500 - 1700	1800 - 2000
Rated Current, A	6.14-6.25	6.82-7.08	8.18-8.33
Electrical protection class	I		
Ingress protection class	IP24		
Heating area, m²	13-15	15-17	18-20
Appliance dimensions (W×H×D), mm	560×120×420	640×120×420	800×120×420
Package dimensions (W×H×D), mm	655×153×445	735×153×445	895×153×445
Net weight, kg	4.03	4.51	5.51
Gross weight, kg	5.07	5.63	6.80

* Electricity consumption is 3 times less than in Electrolux convectors with mechanical control.

4th generation of control box



..... Electronic



..... digital INVERTER

- 3 times more efficient
- Enables to control convector by Wi-Fi
- Open window sensor



ELECTRIC CONVECTORS

EIH/IR series it is unique design and advanced technologies. EIH/IR convectors combine the reliability, special design and quality. The harmonious lines of the body combine with the advanced technologies. The micathermic heating element effectively heats and creates the effect of solar heat. The service life of the heating element is 15 years, which indicates its reliability.

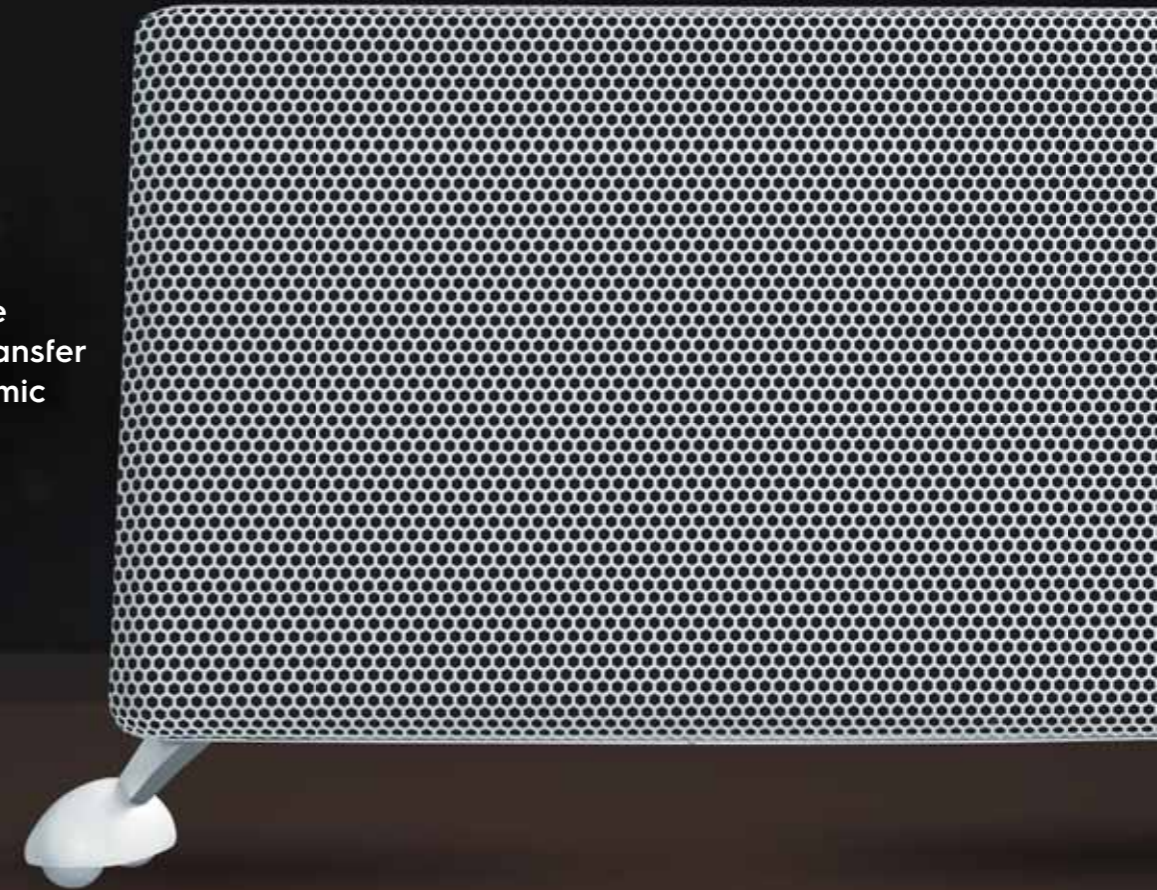


Technical characteristics

Characteristic/Model	EIH/IR - 1500 3AE EEC	EIH/IR - 1800 3AE EEC
Voltage, V/Hz	220-240/50-60	
Heating power Full, W	1350 - 1500	1600 - 1800
Rated Current, A	6.5	8.7
Electrical protection class	I	
Ingress protection class	IP24	
Heating area, m ²	13-15	16-18
Appliance dimensions (W×H×D), mm	640×120×420	800×120×420
Package dimensions (W×H×D), mm	735×153×445	895×153×445
Net weight, kg	3.49	4.57
Gross weight, kg	4.60	5.86



The unique full-size grid for efficient transfer heat and micathermic heating



4th generation of electronic control box:

- Open window sensor
- Full-size color display
- Individual program 24/7

ELECTRIC CONVECTORS

EIH/S series it is the convective-infrared heater for admirers of beauty, functionality & the latest technical solutions. The front panel, which is made of break resistant glass, allows to enjoy unique design & provide absolute safety during use of device.

Two heating elements provide comfort with any thermal insulation of the room:

- The micathermic heating element creates solar heat effect, quiet operation and heating with no loss.
- The HEDGEHOG heating element heats 20% faster and provides absolutely quiet heating.

The 4th generation digital control panel with an LED display and open window sensor allows to set up your electric convector quickly and conveniently.



Technical characteristics

Characteristic/Model	EIH/S - 1500 3BE EEC	EIH/S - 2000 3BE EEC
Voltage, V/Hz	220-240 / 50-60	
Heating power Full, W	1350 - 1500	1800 - 2000
Rated Current, A	6,14-6,25	8,18-8,33
Electrical protection class	I	
Ingress protection class	IP24	
Heating area, m²	13-15	18-20
Appliance dimensions (W×H×D), mm	640×112×424	800×112×424
Package dimensions (W×H×D), mm	735×142×468	895×142×468
Net weight, kg	6,2	7,5
Gross weight, kg	7,55	9,13



4th generation digital control panel:

- LED display
- Open window sensor
- 3 operation modes – comfortable, economy, anti-freezing



Micathermic heating element



HEDGEHOG heating element

ELECTRIC CONVECTORS

ECH/BM series is new unique product made of heat-resistant glass ceramic in marble design of the panel. The control box digital INVERTER ensures the stable maintaining of the desired temperature with the maximum accuracy up to 0,1°C. Top design fits for the most exclusive interiors. The monolithic structure of the air outlet louvers, high class of ingress protection (IP24) and intuitive control with the high-accuracy electronic thermostat. The most advanced full-size carriages provides the additional reliability and safety of convector.



Technical characteristics

Characteristic/Model	ECH/BM-1200 3BI-W EEC	ECH/BM-1600 3BI-W EEC
Voltage, V/Hz	220-240/50-60	
Heating power Full, W	1050 - 1200	1400 - 1600
Rated Current, A	4,77-5,0	6,36-6,67
Electrical protection class	I	
Ingress protection class	IP24	
Heating area, m²	10-12	14-16
Appliance dimensions (W×H×D), mm	640×112×424	800×112×424
Package dimensions (W×H×D), mm	750×142×468	910×142×468
Net weight, kg	7,10	8,20
Gross weight, kg	8,40	9,60



Heat-resistant glass ceramic
marble panel



4th generation of
digital INVERTER control box:

- 3 times more efficient
- Enables to control convector by Wi-Fi
- Open window sensor



ELECTRIC CONVECTORS

Electrolux EIH/AG2 series – is aerodynamic design, wide functions and high operation speed. The product combines two types of heating: convective and infrared, which provide the quick diffusion of the warm air. The heater raises the air temperature by thermal energy radiation. Under convective type of heating, the warm air spreads uniformly across the room.



Technical characteristics

Characteristic/Model	EIH/AG2 -1000 E EEC	EIH/AG2 -1500 E EEC	EIH/AG2 -2000 E EEC
Voltage, V/Hz	220-240/50-60		
Heating power Full, W	900-1000	1350-1500	1800-2000
Rated Current, A	4.1-4.17	6.14-6.25	8.18-8.33
Electrical protection class	I		
Ingress protection class	IP24		
Heating area, m²	10-12	13-15	18-20
Appliance dimensions (W×H×D), mm	480×413×113	640×413×113	800×413×113
Package dimensions (W×H×D), mm	575×445×142	735×445×142	895×445×142
Net weight, kg	3.8	4.9	6
Gross weight, kg	4.58	5.9	7.26

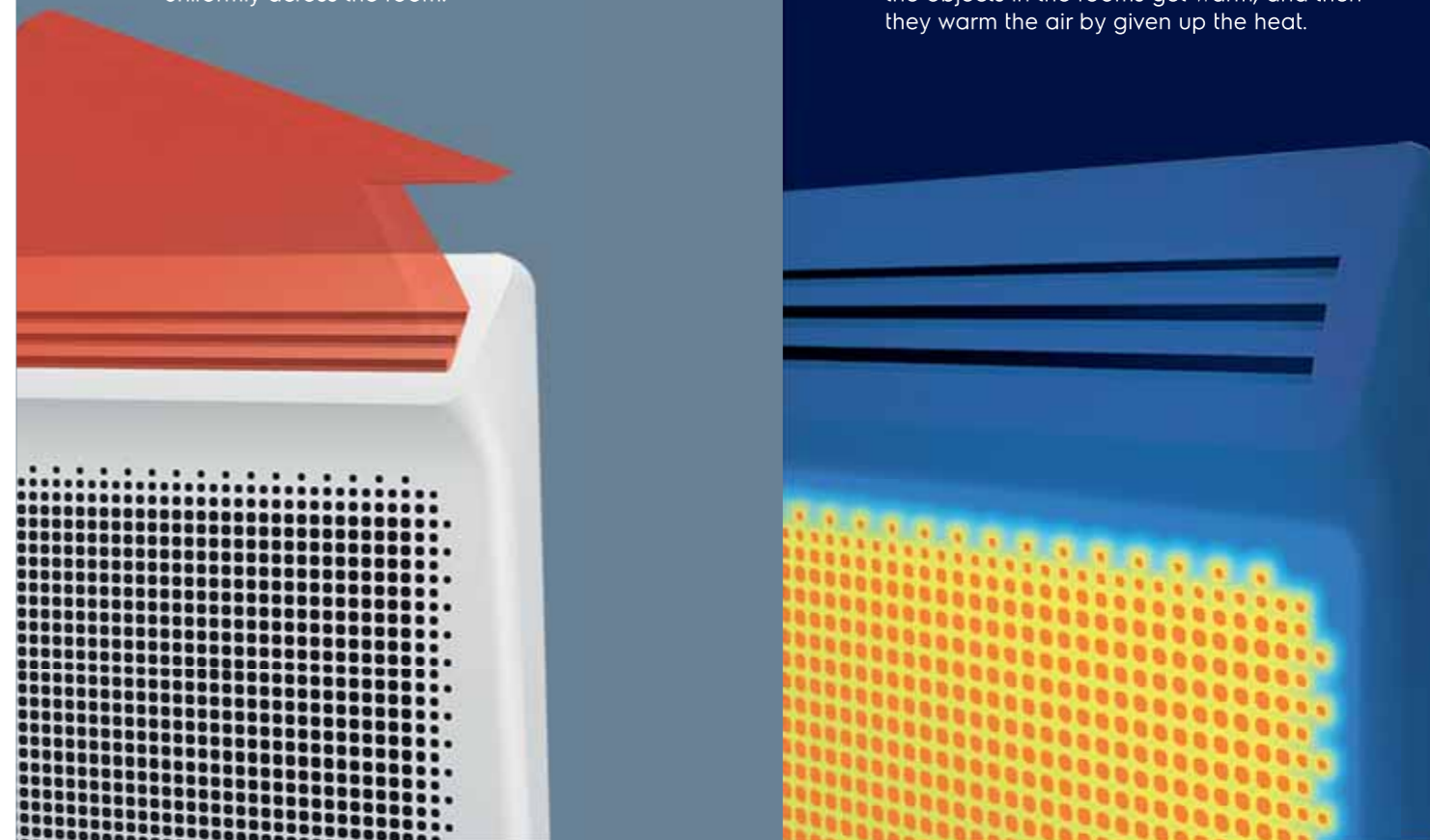


Convective heating

Heating based on the air circulation because of the temperature difference of the flows. Under convective type of heating, the warm air spreads uniformly across the room.

Infrared heating

Effective in the rooms with the weak thermal insulation or with the high ceilings. Under infrared heating the air doesn't get warm, firstly the objects in the rooms get warm, and then they warm the air by given up the heat.



ELECTRIC CONVECTORS

Electrolux ECH/T convectors are innovative heating technologies and maximum reliability. Thanks to the monolithic heating element X-shape type with «shelly» surface, the product can reach the preset heating temperature within 75 seconds. Modern design and easy installation are additional advantages of these series.

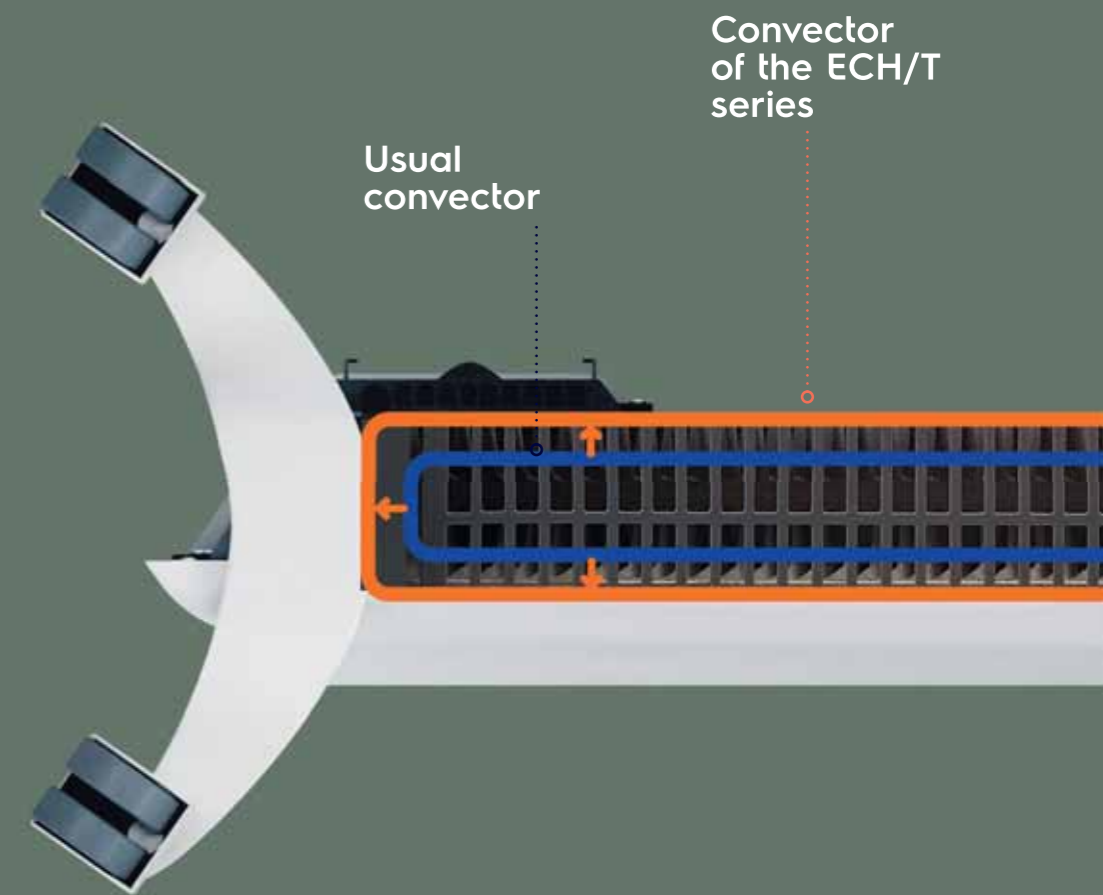


Technical characteristics

Characteristic/Model	ECH/T-1000 E/M EEC	ECH/T-1500 E/M EEC	ECH/T-2000 E/M EEC
Voltage, V/Hz	220-240/50-60		
Heating power Full, W	900 - 1000	1350 - 1500	1800 - 2000
Rated Current, A	4.1-4.17	6.14-6.25	8.18-8.33
Electrical protection class	I		
Ingress protection class	IP24		
Heating area, m²	9-10	13-15	18-20
Appliance dimensions (W×H×D), mm	480×113×413	640×113×413	800×113×413
Package dimensions (W×H×D), mm	575×142×445	735×142×445	895×142×445
Net weight, kg	3.43	4.33	5.23
Gross weight, kg	4.43	5.53	6.63

HD air intake

Convector has an increased area for intake and heating of incoming air.



Variability of installation

UNIQUE OPPORTUNITY EXCLUSIVE DESIGN



More than 1000 variants
of convectors

We can develop the convectors according to your desing



ELECTRIC FAN HEATERS

Fast and safe heating

Electrolux fan heaters – are stylish, reliable products for speedy heating and creation of comfort at home, at office or in the country house. They are compact, mobile and extremely easy to use. Thanks to the contemporary design and universal color range, the fan heaters look stylish in any interior. The innovative heating technologies make them absolutely safe for health: the fan heaters don't burn oxygen and don't dry air, they make the really comfort microclimate in the rooms. There are two power modes and overheat function which are responsible for efficiency and operating safety.



Model range

Power, W

	1500	1800	2000
EFH/C-5120 EEC			•
EFH/C-5125 EEC	•		
EFH/S-1125 EEC	•		
EFH/C-400 EEC	•		
EFH/C-405 EEC			•
EFH/C-9020 EEC		•	



Advantages



Impact and heat resistant plastic

Eliminates the possibility of device thermal deformation and protects from mechanical damage.



Eco-friendly and reliable materials

Completely eliminates all harmful effects for people and environment while using the device.



«ART» series

All the fan heaters product range is made in a single design concept, which is an exclusive Electrolux development.



«Soft Touch» Covering

Fan heaters handles are covered with high-quality elastic plastics, which makes device control as comfortable as it is possible.

ELECTRIC FAN HEATERS

TABLE FAN HEATERS

The Electrolux ceramic table fan heaters keep the healthy amount of oxygen in air and provide the comfort microclimate without air dryness effect. You can enjoy warmth and comfort for many years because the service life of the heating elements is increased twice. The multilevel protection system makes the use of the ceramic fan heaters absolutely safe at home and office.



EFH/C-5120 EEC

EFH/S-1125 EEC
EFH/C-5125 EEC

EFH/C-400 EEC
EFH/C-405 EEC

Technical characteristics

Characteristic/Model	EFH/C-5120 EEC	EFH/C-5125 EEC	EFH/S-1125 EEC	EFH/C-400 EEC	EFH/C-405 EEC
Heating power, W	2000	1500	1500	1500	2000
Heating area, m ²	up to 25	up to 20	up to 20	up to 20	up to 25
Ventilation heating	Yes				
Heating models	uo to 25	up to 20			
Appliance dimensions (W×H×D), mm	190×237×175	185×245×105	184×246×127	241×182×163	186×252×175
Package dimensions (W×H×D), mm	196×245×181	193×258×115	193×258×135	247×192×170	196×265×180
Net weight, kg	1.4	0.9	0.9	1	1
Gross weight, kg	1.6	1.0	1.0	1.1	1.2



High precision thermostat



Shock and heat resistant plastics

ELECTRIC FAN HEATERS

WALL FAN HEATERS

Electrolux wall-mounted fan heaters allow rational use of space and are characterized by a simple installation. Thanks to the unique author's design, they harmoniously fit into the interior, and modern heating technologies will provide a comfortable microclimate in the room.



Technical characteristics

Characteristic/Model	EFH/C-9020 EEC
Heating power, W	1800
Heating area, m ²	up to 25
Ventilation heating	Yes
Heating modes	2
Appliance dimensions (W×H×D), mm	582×260×168
Package dimensions (W×H×D), mm	625×275×200
Net weight, kg	2.7
Gross weight, kg	3.5



Advantages



Precise heating temperature setting

Heating temperature setting within the accuracy of 1°C allows to fine-tune supreme comfortable environment.



Control touchpad

Brand-new comforts due to easy one-touch device control.



Eco-friendly and safe materials

All components of fan heaters are manufactured of high quality and eco-friendly materials, which completely exclude any possibility of harmful effects on humans, animals and environment.

OIL-FILLED RADIATORS

The concept of maximum safety

Electrolux oil filled radiators are equipped with a multi-level security system. The ultra-sensitive tip-over protection sensor instantly disables the device if it deviates from its working position by more than 45°, this is especially needed for families with small children or pets. Also, a unique built-in protection system eliminates the possibility of overheating – it will turn off the device if the maximum permissible operating temperature reaches. And most importantly, the reliability of radiators is inherent in their very design: thanks to the use of advanced technology of soldering sections, all models are sealed.



Model range	Power, W			
	1000	1500	2000	2200
EOH/M series	•	•	•	•
EOH/LT series		•	•	



Advantages



Integrated protection system

Protection system from overheating, tip-over switch, increased impact resistance.



High heating resistant

All sections are made from steel, their thickness increased on 75%, which provides increased impact resistance.



Ecologically clean oil

In the range of oil radiators uses environment-friendly HD-300 oil, passing through a multi-stage cleaning system.



Comfort technology

Full mobility of devices - thanks to the handle and rollers for convenient movement. Absolutely silent work.

OIL-FILLED RADIATORS

RADIATORS

One of the most significant differences of the Electrolux oil radiators is the increased impact resistance. The thickness of the steel sections is increased by 75%, so the device is resistant to mechanical damage. Moreover, due to the improved design, the radiators work almost noiselessly. And thanks to a powerful heating element, they cope perfectly with the task of heating. The instrument control system is simple and practical. All series have convenient and precise mechanical control with a three-stage switch that controls the heating power. A super-reliable mechanical thermostat will keep the temperature at a comfortable level. We use ECO-friendly oil of the European standard HD-300 as a heat carrier.



EOH/M
EOH/M-5105N EEC
EOH/M-5157N EEC
EOH/M-5209N EEC
EOH/M-5221N EEC



EOH/LT
EOH/LT-07W EEC
EOH/LT-09W EEC

Technical characteristics

Model	EOH/ M-5105N EEC	EOH/ M-5157N EEC	EOH/ M-5209N EEC	EOH/ M-5221N EEC	EOH/ LT-07W EEC	EOH/ LT-09W EEC
Sections quantity	5	7	9	11	7	9
Capacity, W	1000/600/400	1500/900/600	2000/1200/800	2200/1200/1000	1500/900/600	2000/1200/800
Heating area, m ²	15	20	25	27	20	25
Appliance dimensions (W×H×D), mm	250×625×250	250×625×330	250×625×405	250×625×480	250×650×360	250×650×440
Package dimensions (W×H×D), mm	295×655×150	370×655×150	435×655×150	505×655×150	415×705×140	495×705×140
Net weight, kg	5.9	7.4	9.1	10.8	7.1	8.4
Gross weight, kg	6.6	8.2	10	11.8	7.8	9.4



Increased comfort

All radiators have a compartment for hidden cord storage. And for comfortable movement on the surface, the radiator is equipped with rollers and a convenient handle.

ELECTRIC FIREPLACES

Electrolux fireplaces are modern solution for any apartment

Electric fireplaces are a worthy alternative to traditional wood-burning fireplaces. We use modern, reliable, and energy-efficient technologies in Electrolux electric fireplaces that make their use truly convenient in any room. The range of Electrolux electric fireplaces represent wall-mounted and portal fireplaces. A variety of styles, shapes, and models will allow you to choose a fireplace that will fit perfectly into any modern space.



Model range	Power, W	
	1800	2000
EFP/W-1100ULS EEC	•	
EFP/W-1150URLS EEC	•	
EFP/W-1200URLS EEC		•
EFP/W-1250ULS EEC		•
EFP/W-2000S EEC		•
EFP/P-2720RLS EEC		•
EFP/P-3320RLS EEC		•
EFP/F-1800 3D EEC	•	
EFP/F-2000R EEC		•
EFP/F-2000 EEC		•



Advantages



Latest generation LED technologies

All Electrolux wall mounted fireplaces are equipped with the innovative flame effect system REAL FIRE PERFECT, which makes the flame look even more realistic.



Two types of decorative fuel

The option to change decorative fuel elements (stones or wood logs) will allow you to give the fireplace a look that matches your mood.



Tempered glass with high resistance

In the production of all models of fireplaces, high-strength glass is used, which is six times stronger than usual.



The sound of crackling wood

All models are equipped with a Real Sound module, for it you can enjoy realistic crackle of the flames as from wood fireplace.

ELECTRIC FIREPLACES

MIRROR FIREPLACES

These electric fireplaces harmoniously combine modern design with unique style. The mirror front panel is an ultra-trendy accent that looks luxurious in any interior. For the decorative fuel "stones" maximum level of comfort is achieved. Two levels of heating power will allow you to create an optimal climate in your room. The fireplace is equipped with an overheat protection system which ensure safety while using. It is easy to operate the device by remote control.



Technical characteristics

Characteristic/Model	EFP/W-2000S EEC
Heating power, W	2000
Sound of crackling firewood	Yes
Decorative fuel	stones
Electronic thermostat	Yes
Timer	Yes
Daily program	Yes
Appliance dimensions (W×H×D), mm	900×560×107
Package dimensions (W×H×D), mm	965×630×165
Net weight, kg	17.4
Gross weight, kg	19



LED display



"Real Fire Perfect" innovative system of flame effect



ELECTRIC FIREPLACES

PANORAMIC FIREPLACES

Electrolux panoramic wall fireplaces give the effect of real flame and maximum view angle. The range of panoramic wall mounted fireplaces includes compact EFP/W-1150URLS EEC model and ultra-wide EFP/W-1200URLS EEC model with maximum flame visibility.



EFP/W-1200URLS EEC

Technical characteristics

Characteristic/Model	EFP/W-1200URLS EEC	EFP/W-1150URLS EEC
Heating power, W	2000	1800
Sound of "crackling woodlogs"	Yes	Yes
Decorative fuel	woodlogs/stones	woodlogs/stones
Electronic thermostat	Yes	Yes
Timer	Yes	Yes
Daily program	Yes	Yes
Appliance dimensions (W×H×D), mm	885×560×135	650×520×114
Package dimensions (W×H×D), mm	975×630×195	710×590×170
Net weight, kg	17.8	12.5
Gross weight, kg	19.7	13.9



Two types of decorative fuel:

The option to change decorative fuel elements (stones or wood logs) will allow you to give the fireplace a look that matches your mood.



Real Fire Perfect

All Electrolux fireplaces are equipped with the patented flame effect system Real Fire Perfect based on advanced LED technology, which creates an effect of absolute realism, transmitting the feeling of "live" fire for a long time.



Panoramic panel

The rounded front panel with a width from 66 to 90 cm visually increases the viewing angle of the flame and decorative fuel of the fireplace. The compact width and thin body of the fireplace will allow you to fit it even in a small space.



ELECTRIC FIREPLACES

FIREPLACES IN FLAT DESIGN

Electrolux ultra-thin wall-mounted fireplaces are ideal for Hi-Tech enthusiasts. The fireplace is supplied with two types of decorative fuel: classic wood, hand-painted to convey the texture of real wood, and white stones. And five modes of the flame allow you to set the level of the light for even more comfort.



EFP/W-1250ULS EEC

EFP/W-1100ULS EEC

Technical characteristics

Characteristic/Model	EFP/W-1100ULS EEC	EFP/W-1250ULS EEC
Heating power, W	1800	2000
Sound of crackling firewood	Yes	Yes
Decorative fuel	woodlogs/stones	woodlogs/stones
Electronic thermostat	Yes	Yes
Timer	Yes	Yes
Daily program	Yes	Yes
Appliance dimensions (W×H×D), mm	660×520×95	900×560×95
Package dimensions (W×H×D), mm	720×590×150	980×630×175
Net weight, kg	12.5	17
Gross weight, kg	13.8	19



Convenient control

You can operate the fireplace using buttons on the device's body or by remote control from any convenient place in the room.



ELECTRIC FIREPLACES

PORTAL FIREPLACES

If you want to create an atmosphere of warmth and comfort in your home Electrolux offers a collection of electric fireplaces with innovative technologies that give you a feeling of relax near a classic wood-burning fireplace.



EFP/P-2720RLS EEC



EFP/P-3320RLS EEC

Technical characteristics

Characteristic/Model	Sphere Plus EFP/P-2720RLS EEC	Sphere Plus EFP/P-3320RLS EEC
Heating power, W	2000	2000
Screen diagonal, inch	27	33
Sound of "crackling woodlogs"	Yes	Yes
Decorative fuel	woodlogs	woodlogs
Electronic thermostat	Yes	Yes
Timer	Yes	Yes
Daily program	Yes	Yes
Appliance dimensions (W×H×D), mm	615×442×252	767×537×279
Build-in dimensions, mm	584×427×188	740×525×209
Package dimensions (W×H×D), mm	670×510×298	825×610×323
Net weight, kg	11.8	16.8
Gross weight, kg	13.2	18.6



The sound of wood crackling



Panoramic front panel



Realistic flame effect with the "Real Fire Perfect" technology



The imitation of brickwork



ELECTRIC FIREPLACES

FREE STANDING FIREPLACES

The Electrolux collection of free standing fireplaces is a modern interpretation of Scandinavian and Western European classics. Due to its compact size and mobility, free standing fireplaces can be installed in any corner of the house. Each model is distinguished by its original shape and design, which make the home interior stylish, cozy and respectable.



EFP/F-2000R EEC
Cylinder-shape
body



EFP/F-2000 EEC
Wood effect slot



EFP/F-1800 3D EEC
3D flame effect

Technical characteristics

Characteristic/Model	EFP/F-2000R EEC	EFP/F-2000 EEC	EFP/F-1800 3D EEC
Heating power Full, W	2000	2000	1800
Appliance dimensions (W×H×D), mm	410×410×645	445×320×740	90×260×548
Package dimensions (W×H×D), mm	460×460×730	495×385×800	445×310×615
Net weight, kg	14.7	12.1	6.3
Gross weight, kg	16.3	13.8	7.4



Real Fire Perfect technology

Maximum realistic flame effect thanks to modern LED technology



Adjustable flame
brightness



Adjustable
flame heating



Safety overheating
thermostat



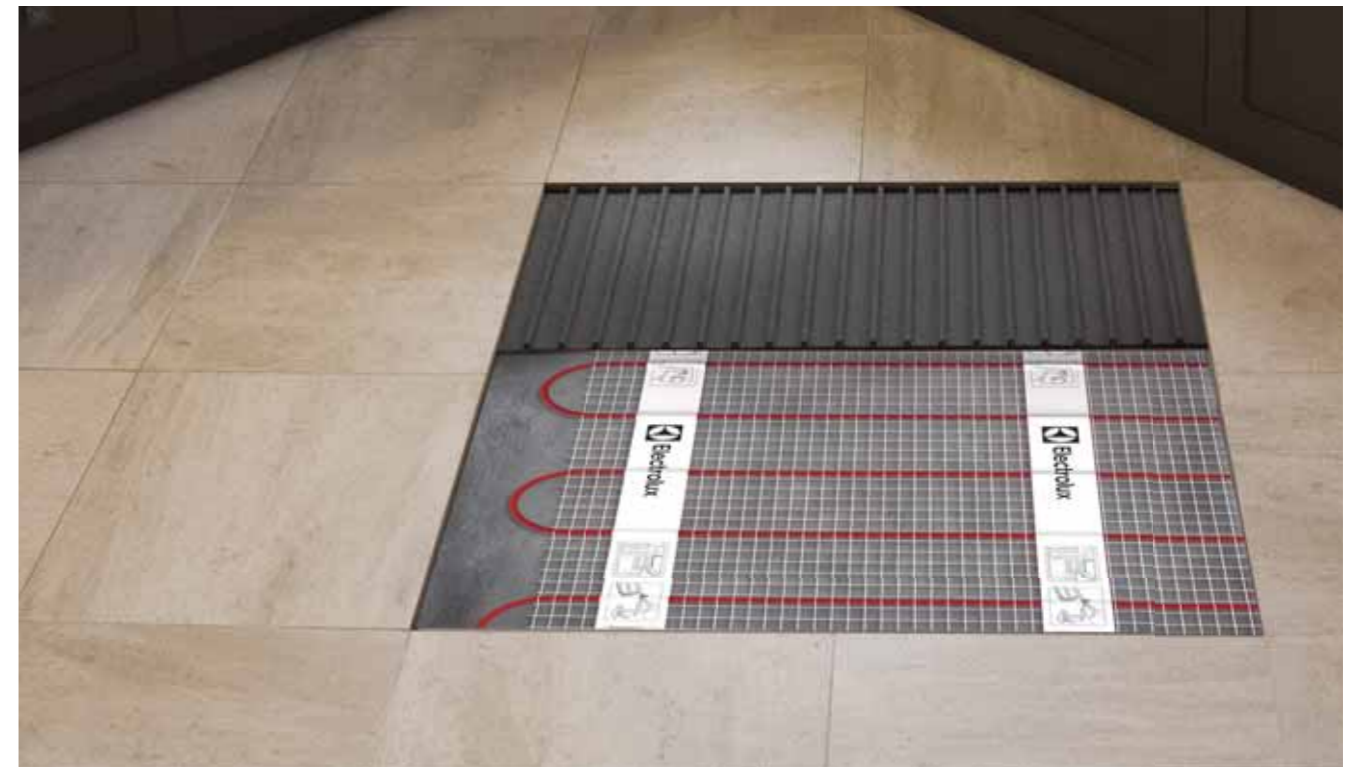
UNDERFLOOR HEATING SYSTEMS

Electrolux professional range

Electrolux underfloor heating system is simple and effective way to fill your apartment or house with warmth and create a cozy atmosphere that disposes to rest. Underfloor heating is safe, durable in operation, and reliable in use. Easy installation, easy maintenance, soft heat, and energy savings-all this is created specifically for your comfort.



Model range	Power, W															
	75	150	225	300	375	450	525	600	750	900	1050	1200	1350	1500	1650	1800
EEFM series	•	•	•	•	•	•	•	•	•	•	•	•	•	•	•	•
EEM series	•	•	•	•	•	•	•	•	•	•	•	•	•	•	•	•



Advantages



Laying without screed

It is recommended for laying under tiles or natural stone, in a thin layer of tile glue, without screed, with a minimum rise in floor level.



Innovative textile base

Textile base unlike fiberglass absorbs tile glue and forms a monolithic screed and excludes the formation of air bubbles.



Maximum safety

Due to RoHS eco-technology using, hi-technology cable and harmless materials using, this product is safe for health and recommended for a living rooms.

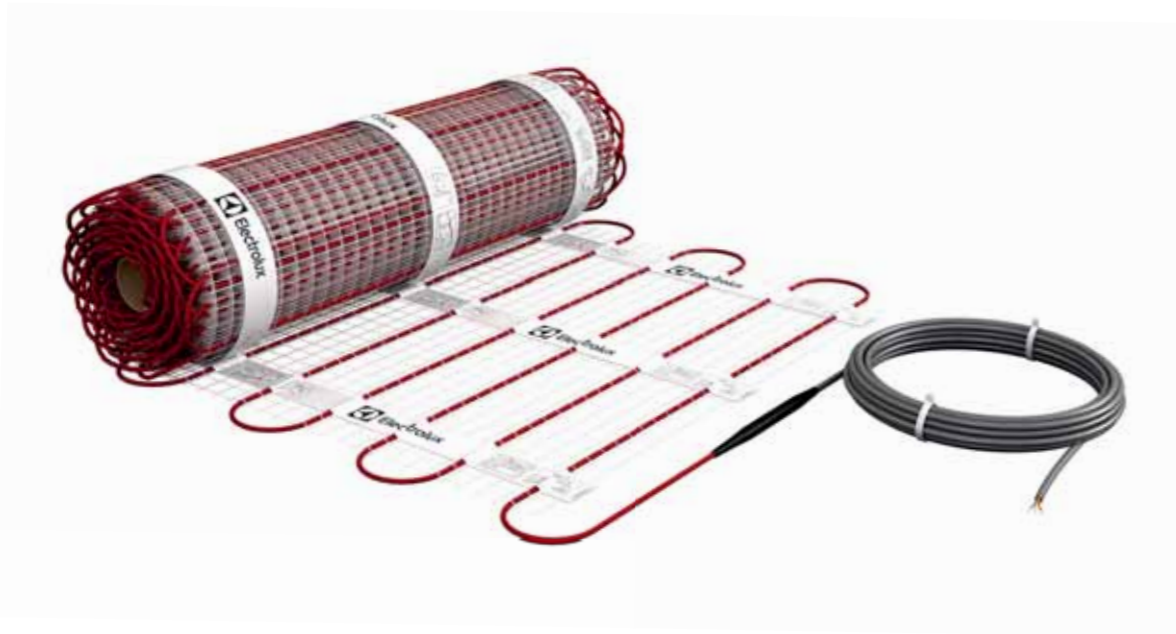


Floor heating control

The range also includes an innovative line of thermostats that can meet various user requirements.

UNDERFLOOR HEATING SYSTEM

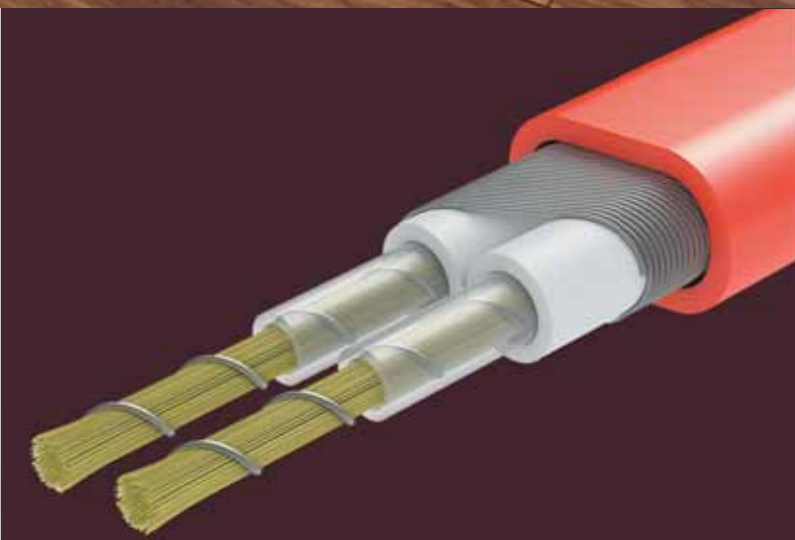
The secret of quick repairs is the installation "without screed" in 5 minutes* The EEFM series is a self-adhesive heating mat based on a thin two-core cable. The EEFMs are ideal for areas where you need to maintain a minimum level of floor lift.



Technical characteristics

Model/Characteristic	Laying area, m ²	Power, W	Length, m	Resistance, Ohms -5 / +10 %
EEFM 2-150-0,5	0,5	75	1	645,3
EEFM 2-150-1	1	150	2	322,7
EEFM 2-150-1,5	1,5	225	3	215,1
EEFM 2-150-2	2	300	4	161,3
EEFM 2-150-2,5	2,5	375	5	129,1
EEFM 2-150-3	3	450	6	107,6
EEFM 2-150-3,5	3,5	525	7	92,2
EEFM 2-150-4	4	600	8	80,7
EEFM 2-150-5	5	750	10	61,2
EEFM 2-150-6	6	900	12	50,0
EEFM 2-150-7	7	1050	14	42,8
EEFM 2-150-8	8	1200	16	37,4
EEFM 2-150-9	9	1350	18	33,3
EEFM 2-150-10	10	1500	20	30,0
EEFM 2-150-11	11	1650	22	27,2
EEFM 2-150-12	12	1800	24	25,0

* Installation and connection time of the EEFM heating Mat to the thermostat—2-150-0,5, excluding additional work. For mats with an area of more than 0.5 m², the installation time may be longer.



Fluoropolymer insulation

The insulation of heating cores of heating mats is made of fluoroplastic, which provides the highest safety and reliability characteristics with a minimum cable thickness (3.5 mm).

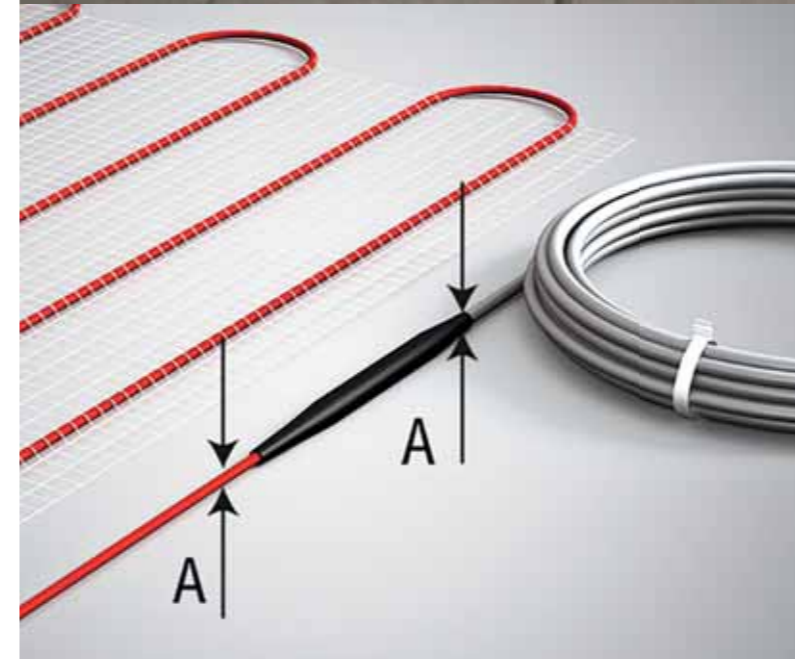
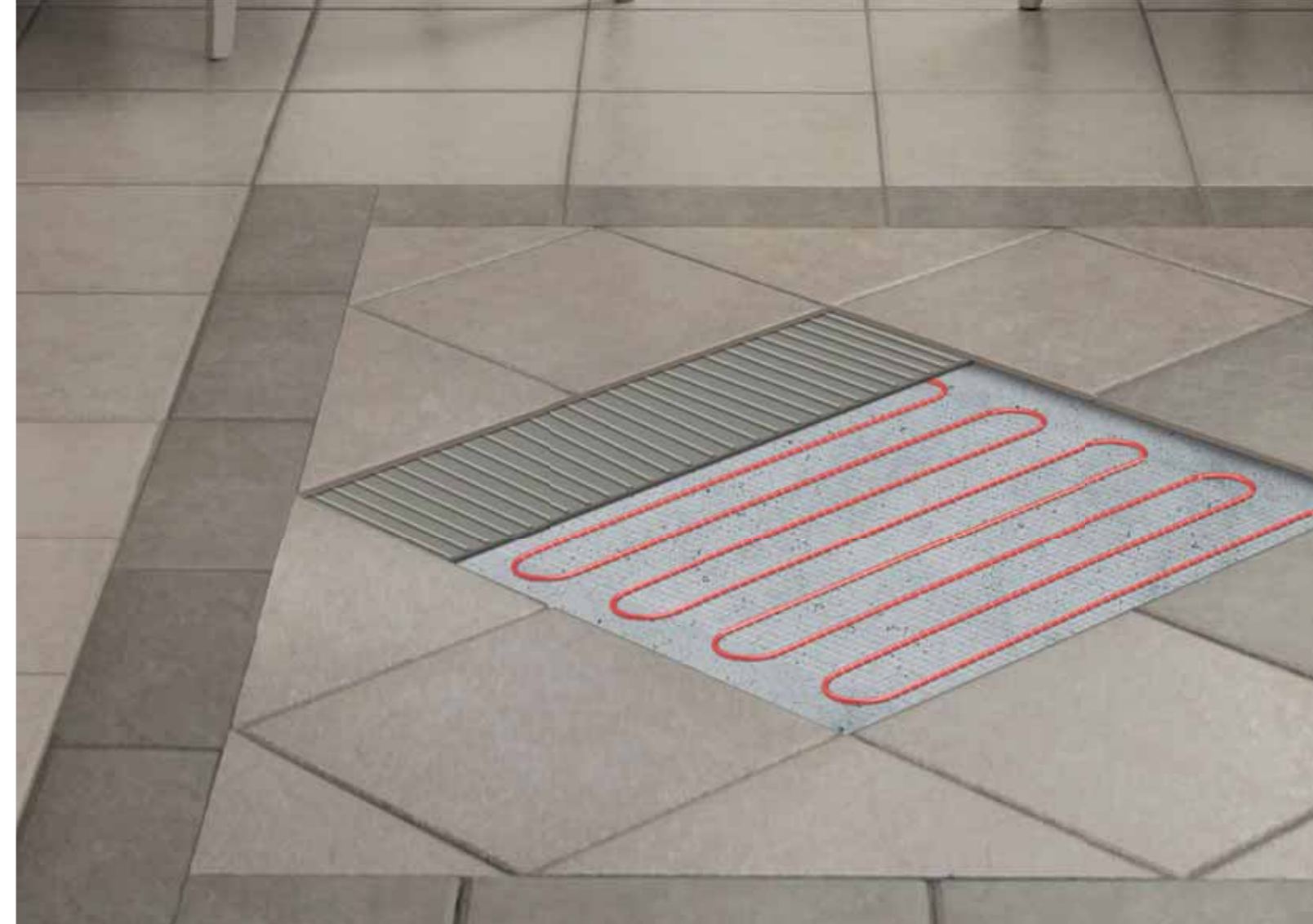
UNDERFLOOR HEATING SYSTEM

EEM series is the eco-friendly underfloor heating with a capacity of 150 W/m². Heating mat based on a thin two-core cable is an optimal microclimate in the room, a real pleasure from using Underfloor heating, care for the users health, and the absence of harmful electromagnetic radiation.



Technical characteristics

Model/Characteristic	Laying area, m ²	Power, W	Length, m	Resistance, Ohms -5 / +10 %
EEM 2-150-0,5	0,5	75	1	645,3
EEM 2-150-1	1,0	150	2	322,7
EEM 2-150-1,5	1,5	225	3	215,1
EEM 2-150-2	2,0	300	4	161,3
EEM 2-150-2,5	2,5	375	5	129,1
EEM 2-150-3	3,0	450	6	107,6
EEM 2-150-3,5	3,5	525	7	92,2
EEM 2-150-4	4,0	600	8	80,7
EEM 2-150-5	5,0	750	10	64,5
EEM 2-150-6	6	900	12	53,8
EEM 2-150-7	7	1050	14	46,1
EEM 2-150-8	8	1200	16	40,3
EEM 2-150-9	9	1350	18	35,9
EEM 2-150-10	10	1500	20	32,3
EEM 2-150-11	11	1650	22	29,3
EEM 2-150-12	12	1800	24	26,9



Thin sealed coupling

The diameters of the coupling and heating cable are almost identical, which does not lead to a further rise in the floor level.



One-way connection

The installation of underfloor heating is significantly more straightforward due to the one-way connection of the power cable.

UNDERFLOOR HEATING SYSTEM

THERMOSTATS FOR UNDERFLOOR HEATING SYSTEMS CONTROL

Thermostats – convenient control

The Thermotronic series is an innovative line of thermostats that can meet various user requirements. The product range includes four models, each of which has a harmonious combination of design and functional properties, will decorate any interior.



ETS –

intuitive control with a harmonious combination of classic style and innovative solutions. This latest-generation thermostat allows you to individually configure the operation of Underfloor heating to ensure maximum comfort, safety, and energy savings.

ETT –

with touch screen, allows you to set periods with different temperatures for a week, has the function Out of lock - blocking from accidental pressing.

ETA –

intuitive control with a harmonious combination of classic style and innovative solutions. This latest-generation thermostat allows you to individually configure the operation of Underfloor heating to ensure maximum comfort, safety, and energy savings.

ETB –

is the electronic thermostat with mechanical control, equipped with a floor temperature sensor.



HAND DRYERS

Custom design and real technological advantages

Electrolux electric hand dryers are compact, stylish, and convenient devices that will become an integral part of any modern building: whether it is a restaurant, educational institution, or shopping and entertainment complex.



Model range

Model range	Power, W			
	800	1000	1200	2500
EHDA-1000AS EEC		•		
EHDA-1000AS SILVER EEC		•		
EHDA-1000AS CHROME EEC		•		
EHDA/BH-800 EEC	•			
EHDA-2500 EEC				•
EHDA/HPF-1200 EEC			•	

Advantages



Contactless control

The main element that drives the system is a sensitive infrared sensor. It triggers and turns on the device at the exact moment when you put your hands to the air outlet grate. The presence of an infrared sensor ensures non-contact activation of the device, which prevents possible contamination and bacteria from the surface of the dryer on the hands when touched. It is the safest, hygienic, and convenient way to turn on the electric hand dryer.



Hand drying without splashing two-way blowing

The Counter Flow technology allows you to dry your hands for 10 seconds without splashing or watermarks on the floor. The function is presented in the model EHDA/HPF-1200 EEC.



Vandal-proof design

The devices are reliably protected from various environmental influences and will work stably in any condition. The body is made of high-strength stainless steel with a thickness of 2 mm, and the inner part (the base of the dryer) is made of an aluminum and silicon alloy that is resistant to mechanical damage. Presented in the EHDA/BH-800 EEC, EHDA-2500 EEC models.



Brushless motor

The unique brushless motor significantly increases the life of the hand dryer. Resource is more than 3000 hours of non-stop operation. Presented in the EHDA/BH-800 EEC model.



"Smart Heating" technology

The microprocessor of the electric dryer automatically changes the power consumption based on the room temperature, which provides energy savings. Presented in the EHDA/BH-800 EEC model.

HAND DRYERS

HIGH-SPEED HAND DRYERS

Hand dryers Drying Master series – perfect combination of custom design, reliability and high efficiency. Thanks to the specific design of the air outlet, powerful heating element and unique position of the infrared sensor in the nose part of the device, the high accuracy of switch-on and excellent dry speed were achieved. The cleanable air filter protects the hands' skin against the dust and bacteria exposure, the built-in sensor protects the device against the overheat.



EHDA-1000AS EEC



EHDA-1000AS
C EEC



EHDA-1000AS
S EEC

Technical characteristics

Characteristic/Model	EHDA-1000AS EEC EHDA-1000AS C EEC EHDA-1000AS S EEC
Voltage, V/Hz	220-240/50-60
Heating power Full, W	1000
Rated Current, A	4.35
Electrical protection class	II
Ingress protection class	IP23
Appliance dimensions (W×H×D), mm	242×342×187
Package dimensions (W×H×D), mm	232×371×286
Net weight, kg	2.8
Gross weight, kg	3.3



Special narrow nozzle and high-velocity brushless motor helps to dry hands in seconds.



HAND DRYERS

HIGH-SPEED HAND DRYERS

The EHDA/BH-800 EEC high-speed hand dryer implements "Smart Heating" technology - the microprocessor of the product automatically changes the power consumption based on the room temperature, significantly saving electricity.

The EHDA-2500 EEC hand dryer with high power of 2500 W and the ability to adjust the sensitivity of the infrared sensor, will satisfy the needs of even the most demanding consumers.



EHDA/BH-800 EEC



EHDA-2500 EEC

Technical characteristics

Characteristic/Model	EHDA/BH-800 EEC	EHDA-2500 EEC
Voltage, V/Hz	220-240/50-60	
Heating power, W	800	2500
Rated Current, A	800	2500
Electrical protection class	I	I
Ingress protection class	IPX2	IPX1
Appliance dimensions (W×H×D), mm	228×278×154	270×240×142
Package dimensions (W×H×D), mm	275×310×195	302×273×180
Net weight, kg	3.3	5.1
Gross weight, kg	3.9	5.5



Vandal-proof design

The devices are reliably protected from various environmental influences and will work stably in any condition. The body is made of high-strength stainless steel with a thickness of 2 mm, and the inner part (the base of the dryer) is made of an aluminum and silicon alloy that is resistant to mechanical damage.



Contactless control

Automatic switching on and off of the hand dryer using a sensitive infrared sensor. Increased comfort, no direct contact with the product's body.



HAND DRYERS

HIGH-SPEED HAND DRYERS

Quick hand drying without splashing. The two-way Counter Flow blowing technology, introduced in the EHDA/HPF-1200 EEC model, will allow you to dry your hands in 10 seconds without splashing and traces of water on the floor.

Eco-friendly plastic and a two-level cleaning system which includes two filters: Hepa filter and coarse filter provide advanced options for installing these dryers in rooms with high sanitary requirements.



Technical characteristics

Characteristic/Model	EHDA/HPF-1200 EEC
Heating power, W	1200
Rated Current, A	5
Electrical protection class	II
Ingress protection class	IPX2
Appliance dimensions (W×H×D), mm	300×650×190
Package dimensions (W×H×D), mm	340×715×260
Net weight, kg	8.18
Gross weight, kg	11

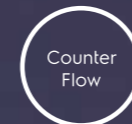


The models are equipped with special high-speed engines that create a powerful air flow at a speed of 60 to 90 m/s. This flow rate ensures high-quality hand drying with minimal time.



Removable air filter

Cleans the air and minimizes skin contact with dust and bacteria.



Hand drying without splashing

The two-way counter Flow blowing technology allows you to dry your hands in 10 seconds without splashing and traces of water on the floor.



LED modes indicator

Notifies the user about current state of the device: if it is turned on/off, if the drying mode is turned on/off and about the end time of the drying process.



ELECTRIC WATER HEATERS

Hot water all year round

Unique multi-level protection technologies, intelligent control systems and modern design solutions are embodied in Electrolux water heaters, which are aesthetically excellent and reliable in operation. Advanced materials and production technologies, control of water heating from anywhere by Wi-Fi (presented in several series), rememberable design and universal mounting – Electrolux water heaters have all in order to provide maximum comfort to your life.



Model range	Power, kW							
	1,5	2	2,5	3,3	3,5	4,2	5,5	6,5
SI series		•						
AZR WiFi series		•						
MXM WiFi series		•						
GLD series		•						
Fmx series		•						
FmxDL series		•						
DR series	•							
Htr DH/Htr DL DH series	•							
GLD Eco series		•						
QT series	•							
LRC series	•							
Q series		•	•					
QS series		•	•					
SMX series					•		•	•
AQ 2.0 series						•	•	
AQ 2.0 DL series						•	•	
Prm/Tpt/Smtp series				•				

Advantages



Universal installation

Electrolux water heaters can be installed both vertically and horizontally, what allows them to be placed even in confined spaces.



CFC-Free technology

High-quality thermal insulation made of polyurethane foam (an environmentally friendly material) allows you to keep the water temperature for a long time and save electricity.



Multi-level security system

From corrosion, from overheating, from exceeding the normal hydraulic pressure. The set also includes a protective power-off device that ensures safe operation and reliably protects against both electric shock and fire. Presented in storage water heaters only.



Protect tank technology

The Protect tank technology protects the internal tank from corrosion thanks to the fine elastic enamel coating "Elastic Cobalt Defense", a safety system and a magnified magnesium anode. Presented in storage water heaters only.

STORAGE WATER HEATERS

Water heaters with intellectual functions

Water heaters SI series – are the modern stylish solution for the effective water heating with the possibility of the operation modes distant control and water disinfection function by Wi-Fi. The products have the flat design with the universal mounting possibility. The ideal solution for hard water heating is dry tubular heating elements "X-Heat", which ensure the absence of scale on heating elements, maintenance without draining water, it helps to extend the service life of the heating elements and the device itself.

The electronic anode ensures continuous operation throughout the entire life of the water heater and also does not require annual replacement and maintenance.



Technical characteristics

Characteristic/Model	EWH 30 SI EEC EWH 30 SI BE EEC EWH 30 SI SE EEC	EWH 50 SI EEC EWH 50 SI BE EEC EWH 50 SI SE EEC	EWH 80 SI EEC EWH 80 SI BE EEC EWH 80 SI SE EEC	EWH 100 SI EEC EWH 100 SI BE EEC EWH 100 SI SE EEC
Capacity, L	25	41	65	81
Power of the heating element, kW	0.7/1.3/2.0	0.7/1.3/2.0	0.7/1.3/2.0	0.7/1.3/2.0
Current voltage / frequency, V/Hz	230/50			
Rated current, A	8.7			
Heating time from 10 to 75°C, min	57	93	148	182
Max. working pressure, Bar	6			
Ingress protection class	IPX4			
Electrical protection class	I			
Appliance dimensions (W×H×D), mm	435×635×260	435×970×260	555×920×350	555×1135×350
Package dimensions (W×H×D), mm	680×485×280	1010×485×280	970×605×362	1185×605×362
Net weight, kg	15.3	22.6	29	33.5
Gross weight, kg	17	25	32.6	37



SI storage water heater

Convectors with the technology digital INVERTER:
Power, W

Traditional convectors: Power, W

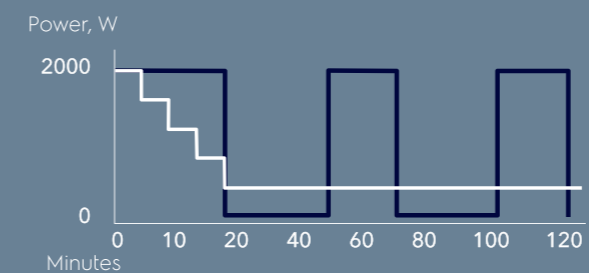
Preset temperature, °C

Convectors with digital INVERTER technology:
Room temperature, °C

Room temperature, °C

Traditional convectors: Room temperature, °C

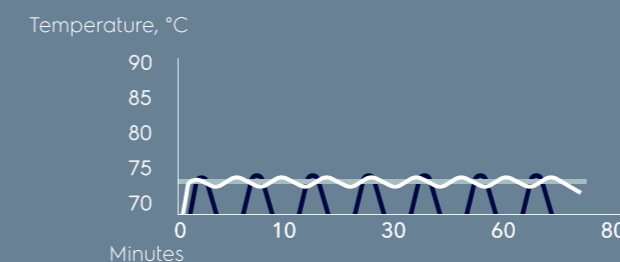
Automatic power switch for energy saving



■ Water heaters with digital INVERTER technology: Power, W

■ Traditional water heaters: Power, W

Temperature accuracy



■ Preset temperature, °C

■ Water heaters with digital INVERTER technology: Power, W

■ Traditional water heaters: Power, W



Dry heating elements—the Ideal solution for hard water

- Two dry heating elements are in a protective flask and do not come into contact with water
- The absence of scale on the heating elements ensures the maximum service life of the water heater
- Maintenance of heating elements without draining water and dismantling the water heater



Electronic anode—efficiency of corrosion protection increased by 10 times

- Continuous operation of the water heater throughout the entire life
- Does not require annual replacement and maintenance



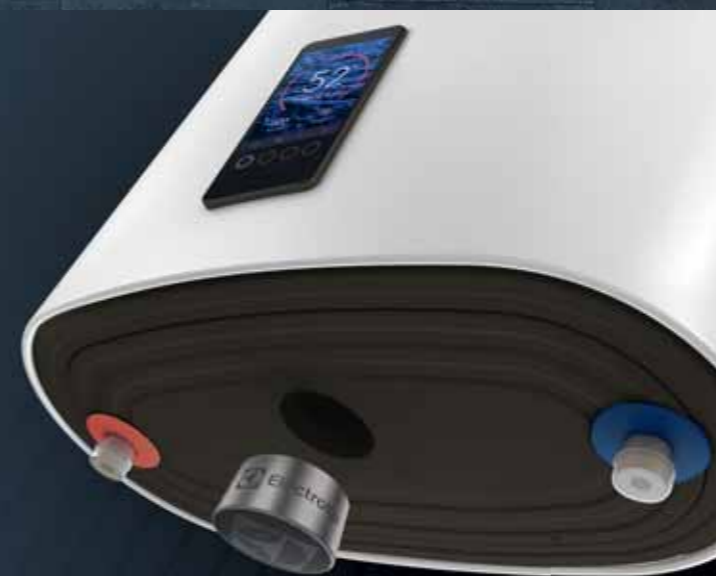
Smart Memory mode Remembering users habits for even more energy saving

You don't need to think about managing the water heater anymore – it will decide when it needs to prepare hot water for you after ten days of its work. Water heater warms only when it is necessary.



Universal installation

SI water heaters can be installed both vertically and horizontally, what allows them to be placed even in confined spaces.



Innovative water heater with Bluetooth speaker

Do not deny yourself the pleasure – your favorite music is always with you.



Increased thermal insulation

Even more energy savings by heat saving.



STORAGE WATER HEATERS

WATER HEATERS IN FLAT BODY

Wi-Fi control is a new level of comfort and the ability to reduce energy costs. Now you can control the settings, set a schedule, select the heating mode, or turn on the Bacteria Stop function, which will prevent the formation of harmful microorganisms in the water.



AZR WiFi

MXM WiFi

Technical characteristics

Characteristic/Model	EWB 30 AZR WiFi EEC EWB 30 MXM WiFi EEC	EWB 50 AZR WiFi EEC EWB 50 MXM WiFi EEC	EWB 80 AZR WiFi EEC EWB 80 MXM WiFi EEC	EWB 100 AZR WiFi EEC EWB 100 MXM WiFi EEC
Capacity, L	25	41	65	81
Power of the heating element, kW	0.7/1.3/2.0			
Current voltage / frequency, V/Hz	230/50			
Rated current, A	8.7			
Heating time from 10 to 75°C, min	57	93	148	182
Max. working pressure, Bar	6			
Ingress protection class	IPX4			
Electrical protection class	I			
Appliance dimensions (W×H×D), mm	435×635×260	435×970×260	555×920×350	555×1135×350
Package dimensions (W×H×D), mm	680×435×280	1010×485×280	970×605×362	1185×605×362
Net weight, kg	15.3	22.6	29	33.5
Gross weight, kg	17	25	32.6	37



Wi-Fi control for even more comfort

For more convenience, control the water heater from anywhere via Wi-Fi using mobile device. Adjust the operation of the device to your habits and get hot water for a specific time. All communications are carried out using the existing Wi-Fi network in the house. (MXM WiFi series are equipped with a USB-connector, AZR WiFi series are equipped with a built in Wi-Fi)



X-Heat

Dry tubular heating elements «X-Heat»

A unique technology in which the heating elements do not come into contact with water. Allows you to extend their service life and, as a result, the service life of the water heater.



Universal installation

Electrolux water heaters can be installed both vertically and horizontally, which allows them to be placed even in confined spaces.



Anti-frost mode

The "Anti-frost" mode activates to heat the water to a safe temperature for the water heater when the temperature inside the device drops below +4 °C.

Economy Mode

Thanks to the Economy mode, the device will only work when it is really necessary and save energy costs. For more convenience, control the water heater remotely via Wi-Fi.

STORAGE WATER HEATERS

WATER HEATERS WITH DRY HEATING ELEMENTS

The devices of these series combine the most modern technologies: electronic control, LED display, multi-stage security system, three power modes. Thanks to X-Heat technology, the heating elements do not have direct contact with water, which significantly increases the service life of the device.

Water heaters are installed universally (horizontal and vertical installation), which allows the most efficient use of space. In addition, these devices are equipped with the functions of water treatment Bacteria Stop, anti-freezing, which will prevent the formation of harmful microorganisms in the water, as well as protect the tank of the device.



GLD



Fmx



FmxDL

Technical characteristics

Characteristic/Model	EWB 30 GLD EEC EWB 30 Fmx EEC EWB 30 FmxDL EEC	EWB 50 GLD EEC EWB 50 Fmx EEC EWB 50 FmxDL EEC	EWB 80 GLD EEC EWB 80 Fmx EEC EWB 80 FmxDL EEC	EWB 100 GLD EEC EWB 100 Fmx EEC EWB 100 FmxDL EEC
Capacity, L - GLD EEC	25	41	65	81
Capacity, L - Fmx/FmxDL EEC	27	46	73	93
Power of the heating element, kW	0.7/1.3/2.0 0.8/1.2/2.0			
Current voltage / frequency, V/Hz	230/50			
Rated current, A	8.7			
Heating time from 10 to 75°C, min – GLD EEC	57	93	148	182
Heating time from 10 to 75°C, min – Fmx/FmxDL EEC	71.6	119.34	190.94	238.68
Max. working pressure, Bar	6 7.5			
Ingress protection class	IPX4			
Electrical protection class	I			
Appliance dimensions (W×H×D), mm	435×635×260 344×545×359	435×970×260 344×825×359	555×920×350 454×729×469	555×1135×350 454×879×469
Package dimensions (W×H×D), mm	680×485×280 429×640×429	1010×485×280 429×920×429	970×605×362 539×849×539	1185×605×362 539×999×539
Net weight, kg	15.3 16.1	22.6 22.08	29 27.17	33.5 31.76
Gross weight, kg	17 17.75	25 24.09	32.6 31.21	37 35.8



Dry tubular heating elements «X-Heat»

A unique technology in which the heating elements do not come into contact with water. Allows you to extend their service life and, as a result, the service life of the water heater.



Universal installation

Electrolux water heaters can be installed both vertically and horizontally, which allows them to be placed even in confined spaces.



Anti-frost mode

To prevent water from freezing, the water heater automatically starts heating when the water temperature in the internal tank falls below 6°C. When the temperature reaches 10°C, the heating stops. This function works when the device is connected to the power supply. (Available in the GLD, FmxDL series).



Bacteria Stop Technology

A cycle of thermal treatments of water inside the product, in which vegetative forms of microorganisms that are in the water and actively multiply during long non-use of the device die. You no longer need to worry about the purity and freshness of the water inside the water heater. (Available in the GLD series).

STORAGE WATER HEATERS

WATER HEATERS WITH DRY HEATING ELEMENTS

Ease of use and absolute reliability in operation are harmoniously combined in modern devices with a mechanical and electronic control units. These water heaters are equipped with "Dry" heating elements that do not have contact with water, and tanks coated with elastic enamel, which guarantees reliable protection against corrosion of all elements and long-term stable operation.



GLD Eco

DR

Htr DH

Htr DL DH

Technical characteristics

Characteristic/Model	EWB 30 GLD Eco EEC EWB 30 DR EEC EWB 30 Htr DH/Htr DL DH EEC	EWB 50 GLD Eco EEC EWB 50 DR EEC EWB 50 Htr DH/Htr DL DH EEC	EWB 80 GLD Eco EEC EWB 80 DR EEC EWB 80 Htr DH/Htr DL DH EEC	EWB 100 GLD Eco EEC EWB 100 DR EEC EWB 100 Htr DH/Htr DL DH EEC
Capacity, L	25 27 27	41 45 46	65 72 73	81 90 93
Power of the heating element, kW	2.0 1.5			
Current voltage / frequency, V/Hz	230/50			
Rated current, A	8.7 6.5			
Heating time from 10 to 75 °C, min	57 104 95.47	93 173 159.12	148 277 254.59	182 346 318.24
Max. working pressure, Bar	6 7.5			
Ingress protection class	IPX4			
Electrical protection class	I			
Appliance dimensions (W×H×D), mm	435×635×260 350×612×350 340×609×352	435×970×260 390×758×390 385×765×397	555×920×350 460×790×460 450×811×462	555×1135×350 460×930×460 450×976×462
Package dimensions (W×H×D), mm	680×485×280 660×410×410 620×405×370	1010×485×280 820×465×465 805×458×411	970×605×362 845×535×535 845×505×465	1185×605×362 980×545×545 1005×505×465
Net weight, kg	15.3 14 14.8	22.6 18.7 20.4	29 24.2 25.5	33.5 28.5 30.9
Gross weight, kg	17 16.1 16.4	25 21.6 23.1	32.6 27.4 28.1	37 31.1 33.8



Universal installation

Electrolux water heaters can be installed both vertically and horizontally, what allows them to be placed even in confined spaces. (Available in the GLD Eco, Htr DH, Htr DL DH series).



Dry tubular heating elements «X-Heat»

A unique technology in which the heating elements do not come into contact with water. Allows you to extend their service life and, as a result, the service life of the water heater.



ECO mode

When you select the ECO mode, the water in the device is heated to 55 ° C. At this temperature, scale protection is provided, and increases the resource of the heating element.



Protect tank technology

The Protect tank technology protects the internal tank from corrosion thanks to the fine elastic enamel coating "Elastic Cobalt Defense", a safety system and a magnified magnesium anode.

STORAGE WATER HEATERS

WATER HEATERS IN ROUND BODY

Simple and high-quality devices are designed specifically for fans of classic models. Water heaters of these series have a round body, a heating element with an optimal power of 1.5 kW, mechanical control with the possibility of choosing an ECO-mode, in which water is heated to 55 °C.

In addition, models of these series do not require user control: after installation, you just need to select the heating temperature so that you always have hot water at your disposal.



Technical characteristics

Characteristic/Model	EWH 30 LRC EEC EWH 30 QT EEC	EWH 50 LRC EEC EWH 50 QT EEC	EWH 80 LRC EEC EWH 80 QT EEC	EWH 100 LRC EEC EWH 100 QT EEC
Capacity, L	27	46	73	93
Power of the heating element, kW	1.5	1.5	2	2
Current voltage / frequency, V/Hz	230/50			
Rated current, A	6.5	6.5	8.7	8.7
Heating time from 10 to 75 °C, min	95.47	159.12	254.59	318.24
Max. working pressure, Bar	7.50			
Ingress protection class	IPX4			
Electrical protection class	I			
Appliance dimensions (W×H×D), mm	340×605×358 340×594×358	385×770×403 385×760×403	450×805×468 450×809×468	450×970×468 450×974×468
Package dimensions (W×H×D), mm	640×405×370 640×405×370	805×458×411 805×458×411	845×505×465 845×505×465	1005×505×465 1005×505×465
Net weight, kg	14.8 14	17.8 17.5	25.5 25.5	30.9 29.7
Gross weight, kg	16.4 15.6	20.1 19.6	28.1 27.65	33.8 32.4



ECO mode

When you select the ECO mode, the water in the device is heated to 55 °C. At this temperature, scale protection is provided, and increases the resource of the heating element.



CFC-Free technology

High-quality thermal insulation made of polyurethane foam (an environmentally friendly material) allows you to keep the water temperature for a long time and save electricity.



Convenient mechanical control panel

It is very easy to control the water heater using the intuitive mechanical control panel.



Protect tank technology

The Protect tank technology protects the internal tank from corrosion thanks to the fine elastic enamel coating "Elastic Cobalt Defense", a safety system and a magnified magnesium anode.

STORAGE WATER HEATERS

COMPACT WATER HEATERS

Ultra-compact models that are able to create for you the comfort where it is not possible to be done other water heaters. These water heaters are ideal for the kitchen or country house – just 19 minutes and 10 liters of hot water at your disposal.

Electrolux compact water heaters are equipped with a magnesium anode and have the "Elastic Cobalt Defense" enamel coating, protects the internal tank and the heating element. The heating element covered with the same enamel coating as the inner tank.



Technical characteristics

Characteristic/Model	EWH 10U/O Q EEC EWH 10U/O QS EEC	EWH 15U/O Q EEC EWH 15U/O QS EEC
Capacity, L	10.5	15.5
Power of the heating element, kW	2	2.5
Current voltage / frequency, V/Hz	230/50	
Rated current, A	8.7	10.9
Heating time from 10 to 65/75 °C, min	19	23
Max. working pressure, Bar	7.5	
Ingress protection class	IPX4	
Electrical protection class	I	
Appliance dimensions (W*H*D), mm	324*324*315	368*368*340
Package dimensions (W*H*D), mm	350*385*350	395*427*383
Net weight, kg	7.5	9.6
Gross weight, kg	8.8	11.2



Fast heating

Compact storage water heaters will provide you with hot water quickly.



Powerful heating element

The water heaters have a powerful heating element, which will provide heating of cold water with a delta of 40 °C in 19 minutes for 10 liters and 23 minutes for 15 liters.



Compact sizes

Water heaters are so compact that you can install them in the most modest areas.



Protect tank technology

The Protect tank technology protects the internal tank and heating element from corrosion thanks to the fine elastic enamel coating "Elastic Cobalt Defense", a safety system and a magnified magnesium anode.

INSTANTANEOUS WATER HEATERS

COMPACT WATER HEATERS

Electrolux instantaneous water heaters are reliable, easy to install, and provide simplicity and convenience. A wide range of models can meet the needs of all categories of customers: those who need an easy-to-manage compact water heaters, and those who prefer intelligent solutions.



SMX

AQ 2.0

AQ 2.0 DL

Technical characteristics

Characteristic/Model	SMX 3,5T EEC SMX 3,5S EEC SMX 3,5TS EEC	SMX 5,5T EEC SMX 5,5S EEC SMX 5,5TS EEC	SMX 6,5T EEC SMX 6,5S EEC SMX 6,5TS EEC
Rated Voltage, V	220		
Type of Heating Element	copper pipe		
Power, W	1500 - 2000 - 3500	2200 - 3300 - 5500	3000 - 3500 - 6500
Rated Frequency, Hz	50		
Minimum operating pressure (bar)	0.7 - 6.0		
Water flow (L/ MIN) for Δt 25 °C	2	3.1	3,7
The resistivity of the water Omega cm Ω	$\geq 800 \Omega$ 15 °C		
Ingress protection class	IPX4		

Characteristic/Model	NP 4 AQTRC 2.0 EEC	NP 6 AQTRC 2.0 EEC	NPX 4 AQTRC 2.0 EEC	NPX 6 AQTRC 2.0 EEC
Rated Voltage, V	220			
Type of Heating Element	Ni80Cr20			
Power, W	4200	5500	4200	5500
Rated Frequency, Hz	50			
Water flow (L/ MIN) for Δt 29 °C	2	2.8	2	2.8
Accuracy of heating to the established temperature, °C	-		1	
The resistivity of the water Omega cm Ω	$\geq 800 \Omega$ 15 °C			
Ingress protection class	IPX4			



Simplicity and convenience

Using Electrolux instantaneous water heaters is extremely simple – you just need to turn the tap on.



Compact size

Instantaneous water heaters are so compact that you can install them at any areas.



INSTANTANEOUS WATER HEATERS

INSTANTANEOUS WATER HEATER-TAPS

Electrolux water heater-taps are applied with "AirFuse" technology, which controls the water level in the heating element chamber. Because of the special design of this camera, the air pressure from outside does not allow the chamber to be completely filled with water. In addition, "SteamDrive" technology does not allow the device to be overheated. If there is no water supply when the device turns on, hot steam will be released through special holes faster than ever.



Tptrc Prm

Tptrc S

Tptrc
Black / White

Smtpr

Technical characteristics

Characteristic/Model	Tptrc Prm EEC	Tptrc S EEC	Tptrc (White) EEC	Tptrc (Black) EEC	Smtpr EEC
Rated Voltage, V	230				
Type of Heating Element	Ni80Cr20				
Half/ Full Power, W	3300			3000	
Rated Frequency, Hz	50				
Water flow (L/ MIN) for Δt 29°C	1.48			1.3	
Accuracy of heating to the established temperature, °C	±2	±10			
The resistivity of the water Omega cm Ω	≥800 Ω 15°C				
Ingress protection class	IPX4				



Easy installation

Tptrc and Smtpr series should be installed instead of usual faucets or at any solid horizontal surface, and the installation does not require much time. In addition, to connect the power supply you just need to plug your heater in.



Stylish design

All models have a stylish and unique design that will be reliable in any interior. Smtpr series has a flexible faucet which is very convenient for everyday usage. Tptrc series represented in two colors – black and white, while S and Prm models have stainless steel body.



AIR-HANDLING UNITS

Clean and oxygen-rich air

Electrolux supply air purifiers are professional devices that automatically ventilates, cleans air and maintains a comfortable temperature indoor. Wi-Fi control ensures a healthy microclimate in your home even from a distance.



Model range

Power, W

85

EASP-200 W EEC

•

Advantages

Ventilation mode

In the ventilation mode, EASP-200 W EEC takes air from the street, warms it to a comfortable temperature and cleans it from harmful impurities, suspensions and odors through a six-stage filtration system.

Circulation mode

In circulation mode, EASP-200 W EEC works like a professional air purifier, taking air from the room and purifying it through a multi-level filtration system. It will save you from cigarette smoke, viruses and bacteria, unpleasant odors and dust.

200
m³/h

Fresh air supply

Provides an inflow of fresh, oxygen-rich air into the room from the street in the required volume of up to 200 m³ per hour.

PM
2.5

Sensor of the air quality

Built-in PM 2.5 sensor detects the level of dust inside the room and automatically controls the cleaning intensity.

TURBO

Turbo mode

This mode will completely renew the air in a room of 25 m² and reduce the target temperature of the incoming air to +5°C in 15 minutes. The countdown timer will automatically return to the previous operating mode.

AROMA

Aroma capsule

The device has an capsule for aroma oils, which allows you to create an individual atmosphere for every taste.

CO₂

CO₂ sensor

Detects the concentration of carbon dioxide and, by controlling the inflow valve, automatically ventilates the room when it is necessary.

UV

Ultraviolet lamp

UV lamp destroys pathogens, bacteria and viruses contained in the air at the cellular level.

HEATING

Heating of the fresh air

In cold weather, a highly efficient ceramic heating element warms the incoming air from -40 °C to a comfortable temperature, and intelligent climate control automatically ensures temperature stability.

PLASMA

Cold plasma generator

The cold plasma generator deactivates harmful microorganisms and viruses inside the device and the room.

AIR-HANDLING UNITS

Electrolux EASP-200 W EEC is an intelligent supply air purifier equipped with an inverter DC motor, with indoor air recirculation mode. It is designed to supply fresh and purified air to any residential premises with an area of up to 75 m². At the same time, the device works effectively in the autumn-winter period at outdoor temperatures up to -40 °C.

Professional 6 stages air purification system eliminates 99.9% of air pollution, absorbs unpleasant odors, and disinfects from viruses and bacteria. The built-in PM2.5 sensor controls automatically the cleaning intensity in the circulation mode, depending on the air quality.



Technical characteristics

Characteristic/Model	EASP-200 W EEC
Voltage, V/Hz	220-240/50-60
Capacity, m ³ / hour	25/35/45/60/75/90/120/150/200*
Noise level, dB	19 - 45
Ingress protection class	IP20
Electrical protection class	II
Rated power, W	1085
Rated power of the heating element, W	1000
Operating temperature, C°	from -40to +50
Filter class	M5, H11, Carbon filter
Diameter of the inlet, mm	120
Appliance dimensions (W×H×D), mm	445×575×190
Package dimensions (W×H×D), mm	500×620×235
Net weight, kg	7.5
Gross weight, kg	8.9

* An approximate value, which may differ depending on the actual operating conditions.



The device has an capsule for aroma oils, which allows you to create an individual atmosphere for every taste.



The device has a user-friendly interface that provides by color display.



Learn more on our website
www.home-comfort.com

Electrolux is a registered trademark used under license from AB Electrolux (publ).

Mistakes and typing errors may be permitted in texts and numeric notations. Product design and technical data may vary from the one pictured on the packaging. Please refer to a sales consultant for more detailed information.

